



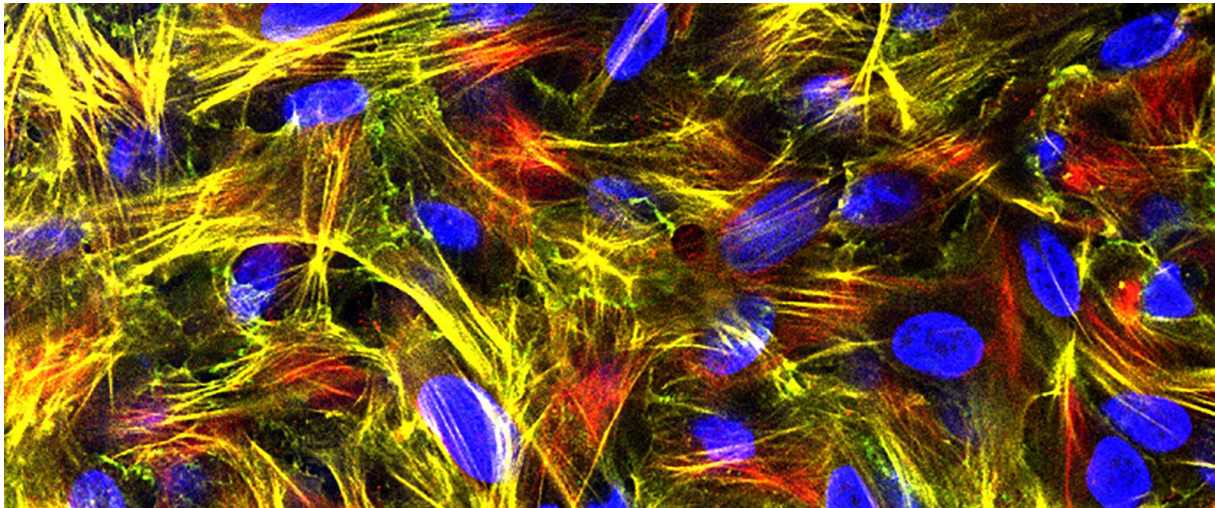
Workshop on 3D cell culture models:

Lung, intestine and skin tissues

Organized by the PATROLS and CITYCARE consortia

Adolphe Merkle Institute, Fribourg, Switzerland

8-9th July, 2019



Module I	Skin	Harvesting, seeding and imaging of 3D skin model
Module II	Lung and intestine	Seeding of triple cell co-cultures and live cell staining and imaging
Module III	Realistic exposures	Model exposures using VitroCell™ Cloud and DALI Bioreactor
Module IV	Blood isolation	Isolation of primary immune cells



Day 1: Monday, 8th of July 2019

8.45 – 9.15	Arrival, registration and coffee
9.15-12.00	Theoretical part
9.15-10.00	Application of advanced 3D co-culture models , Prof. Dr. B. Rothen-Rutishauser
10.00-10.15	Engineering of a dynamic model of the alveolar interface for the study of aerosol deposition , Roberta Nossa, University of Pisa, Italy
10.15-10.30	In vitro model for the prediction of respiratory sensitization , Dr. S. Cambier, LIST, ERIN, Belvaux, Luxembourg
10.30-10.45	Break
10.45-12.00	Construction of a Full Thickness Skin Model Using RAFT™ 3D Cell Culture System , LonzaPharma and Biotech -Bioscience Solutions Reconstructed human skin equivalents- past, present and future – Dr. H. Kandarova - Centre of Experimental Medicine SAS, Bratislava, Slovakia
12.00-13.00	Lunch
13.00-16.00	Practical part
13.00-16.00 Group A	Module I: Skin
13.00-16.00 Group B	Module II: Lung and intestine
16.30-17.30	Module III: Realistic exposures with VitroCell™ Cloud and DALI Bioreactor
16.30-17.00 Group A	
17.00-17.30 Group B	
19.00-21.00	Dinner in Fribourg

Day 2: Tuesday, 9th of July 2019

8.30-12.00	Module IV: Blood isolation
8.30-9.00 Group A and B	
9.00-12.00 Group A	Demonstration of blood isolation
9.00-12.00 Group B	Module I: Skin
12.00-13.00	Lunch
13.00-16.00	
13.00-16.00 Group B	Module IV: Blood isolation
13.00-16.00 Group A	Module II: Lung and intestine
16.00-16.30 Group A and B	Live cell imaging
16.30-17.00	Closing remarks



Safety

Please wear long trousers and closed shoes in the lab for safety purposes. Lab goggles will be provided.

Dinner

Lunch and dinner is not included in this workshop. Please bring cash (Swiss Franc – CHF) for lunch and dinner. If you have any dietary restriction, please let us know.

Contact information

For questions regarding the workshop please send an email to amieuworkshop@gmail.com.

Venue

Adolphe Merkle Institute
University of Fribourg
Chemin des Verdiers 4
CH-1700 Fribourg
+41 26 300 9254
info-ami@unifr.ch
www.ami.swiss/en/about-us/contact/



Support and sponsoring

Lonza

This workshop is sponsored by LonzaPharma and Biotech



This workshop is supported by the Adolphe Merkle Foundation and by two European Union's Horizon 2020 research and innovation programmes, under the Marie Skłodowska-Curie grant agreement No 765602 (www.citycare-itn.eu) and under grant agreement No 760813 (www.patrols-h2020.eu).